

## Statistics for reported casualties on Calder Freeway (Western Ring Road to Calder Park Raceway) for three Periods:-

1. 1st January 1993- to 31 December 1997

### Number of Crashes

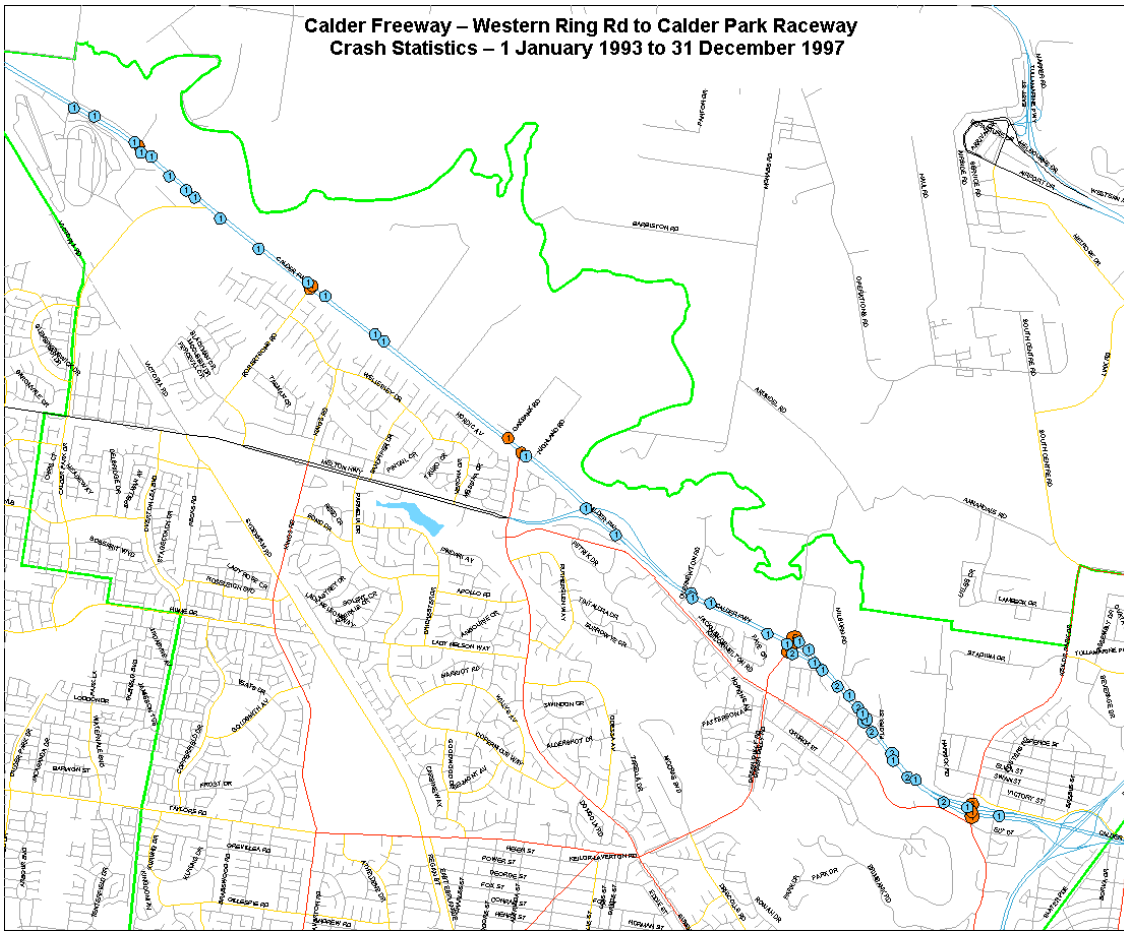
Year	Fatal	Serious	Other	Total
	Injury	Injury		
1993	1	5	8	14
1994	0	4	9	13
1995	0	3	5	8
1996	0	7	16	23
1997	1	6	9	16
Total	2	25	47	74

See attached Map No 1 for locations. Blue dots are at non-intersections and Red dots are at intersections

2. 1st January 1998- to 31 December 2003 incls

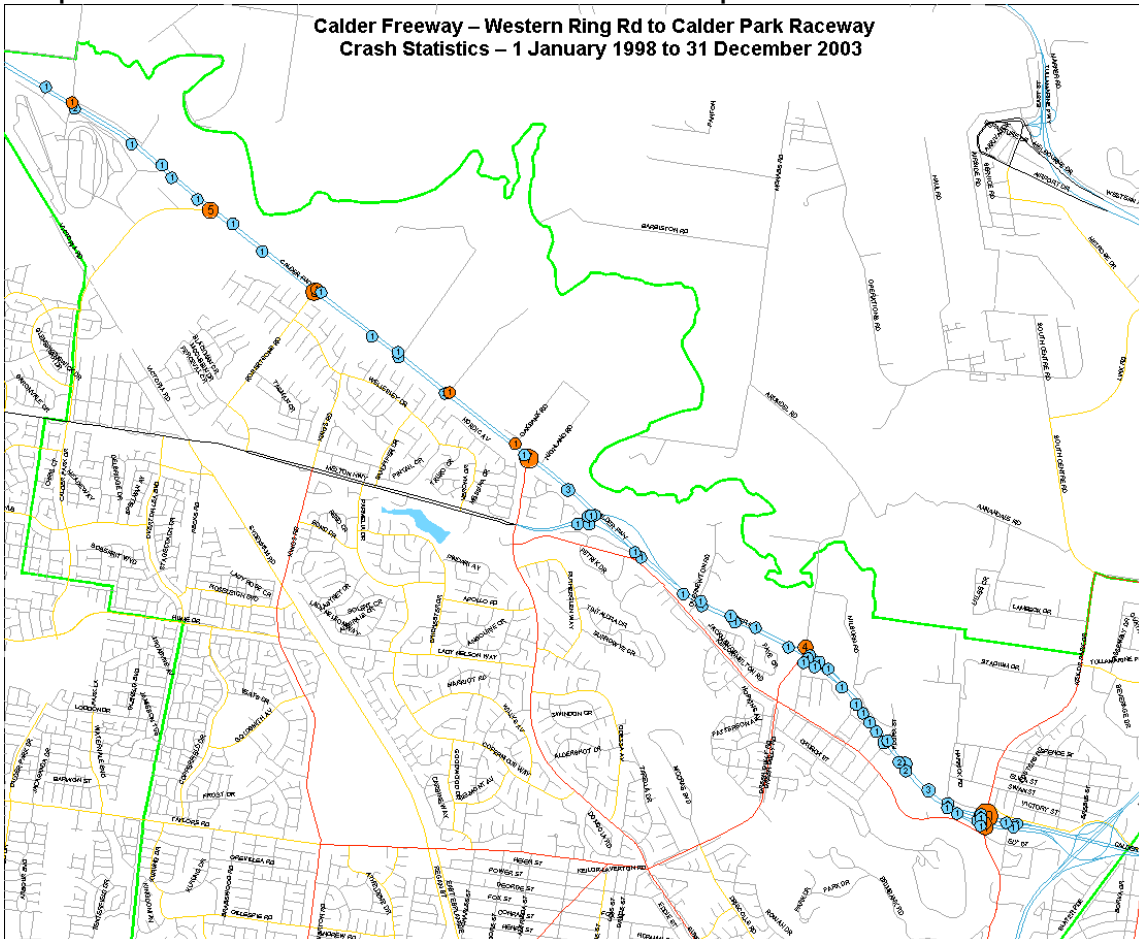
### Number of Crashes

Year	Fatal	Serious	Other	Total
		Injury	Injury	
1998	2	6	12	20
1999	0	6	7	13
2000	0	6	10	16
2001	2	7	11	20
2002	1	13	13	27
2003	2	8	11	21
Total	7	46	64	117



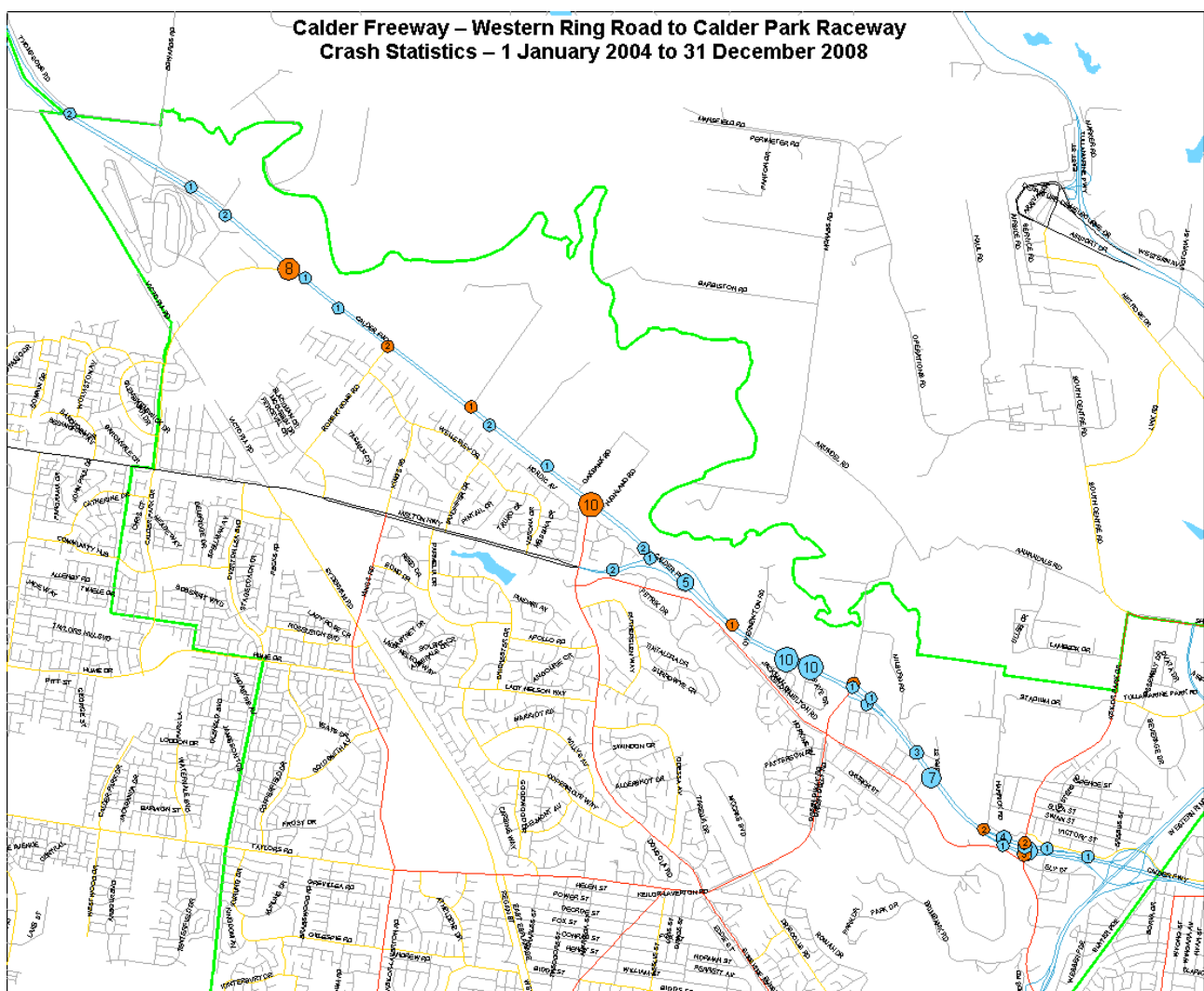
Map 1 above

Map 2 below



### 3. Period 1 Jan 2004 - 31 Dec 2008

Number of Crashes				
Year	Fatal	Serious Injury	Other Injury	Total
2004	2	7	21	30
2005	0	11	16	27
2006	0	12	3	15
2007	0	13	7	20
2008	0	5	2	7
Total	2	48	49	99



Note that all these statistics are available on VicRoads website <http://crashstat1.roads.vic.gov.au/crashstats/crash.htm> and through the button for Statistics and Research.

